



16<sup>th</sup> July 2021

Dear Parents and Carers,

## Principal's Update

I hope this penultimate letter of the school year finds you and your families well. I appreciate

### Covid-19: Changes to contact tracing in schools

**The following information is taken from guidance issued to schools last night.**

As you know, the Prime Minister announced on 12th July that Step 4 of the roadmap would go ahead on 19th July. One of the key changes that will take place from 19th July is that **schools will no longer be asked to conduct routine contact tracing**. As with positive cases in any other setting, NHS Test and Trace will work with either the positive case – or in the case of children – the parents, carers or guardian of the positive case to identify close contacts.

NHS Test and Trace already manages the contact tracing process for the rest of society – including children who have recorded a positive PCR test – and has expertise in supporting people to identify close contacts.

The detail below explains how that process will work and what you need to do if your child tests positive for COVID-19.

### Self-isolating and taking a test

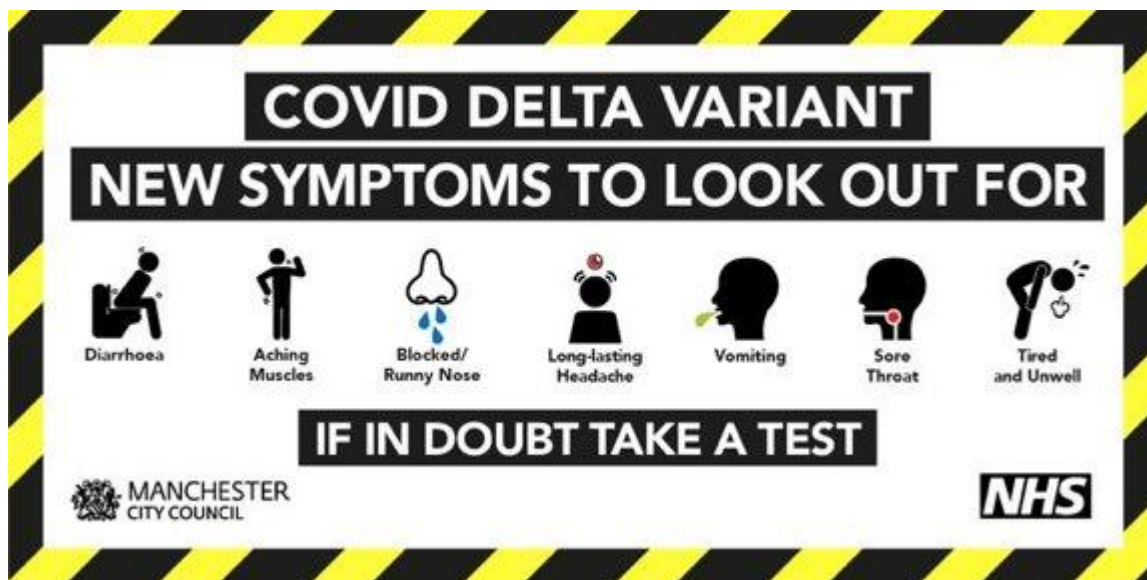
**If your child has symptoms, they and other members of the household should self-isolate – and you should inform their education or childcare setting. You should immediately order a PCR test for them.** If the PCR result is negative, they and other members of their household can stop self-isolating (unless instructed to self-isolate for other reasons). **If the PCR result is positive, they, other members of their household and any close contacts identified by NHS Track and Trace must self-isolate until 10 days after the onset of symptoms**

**If your child has a positive result from a lateral flow device (LFD) test, they and other members of the household should self-isolate – and you should inform their education or childcare setting. You should immediately order a confirmatory PCR test.** If the confirmatory test is taken within two days and the result is negative, they and other members of their household can stop self-isolating (unless instructed to self-isolate for other reasons). **If the confirmatory PCR test is positive (or is taken more than two days after the LFD), other members of their household and any**

close contacts identified by NHS Track and Trace must self-isolate until 10 days after the LFD test.

PCR tests can be booked online through the [NHS Test & Trace website](https://www.nhs.uk/119) or by calling 119.

PCR test results will be recorded with NHS Test and Trace automatically, but you should also communicate the result to the education or childcare setting during term time or summer provision. This is really important for us in anticipating the likely impact on the school so please report to [covid@wellacre.org](mailto:covid@wellacre.org)



## Contact tracing

If your child gets a positive PCR test result, NHS Test and Trace will contact you, using the details you registered when ordering the PCR test. You and/or your child will be asked a series of specific questions designed to identify who your child has been in close contact with. **Being in an education setting with someone who has tested positive for COVID-19 will not necessarily mean a person is identified as a close contact.**

You will be asked to provide the contact details, if you know them, of any of the individuals – or their parents or guardians – who have been identified as close contacts. NHS Test and Trace will then get in touch with these close contacts and provide appropriate instructions or advice.

## Self-isolation and/or testing of close contacts

**At present, anyone identified as a close contact is legally required to self-isolate and must not attend their education setting** (the only exception is if they are participating in a daily contact testing trial).

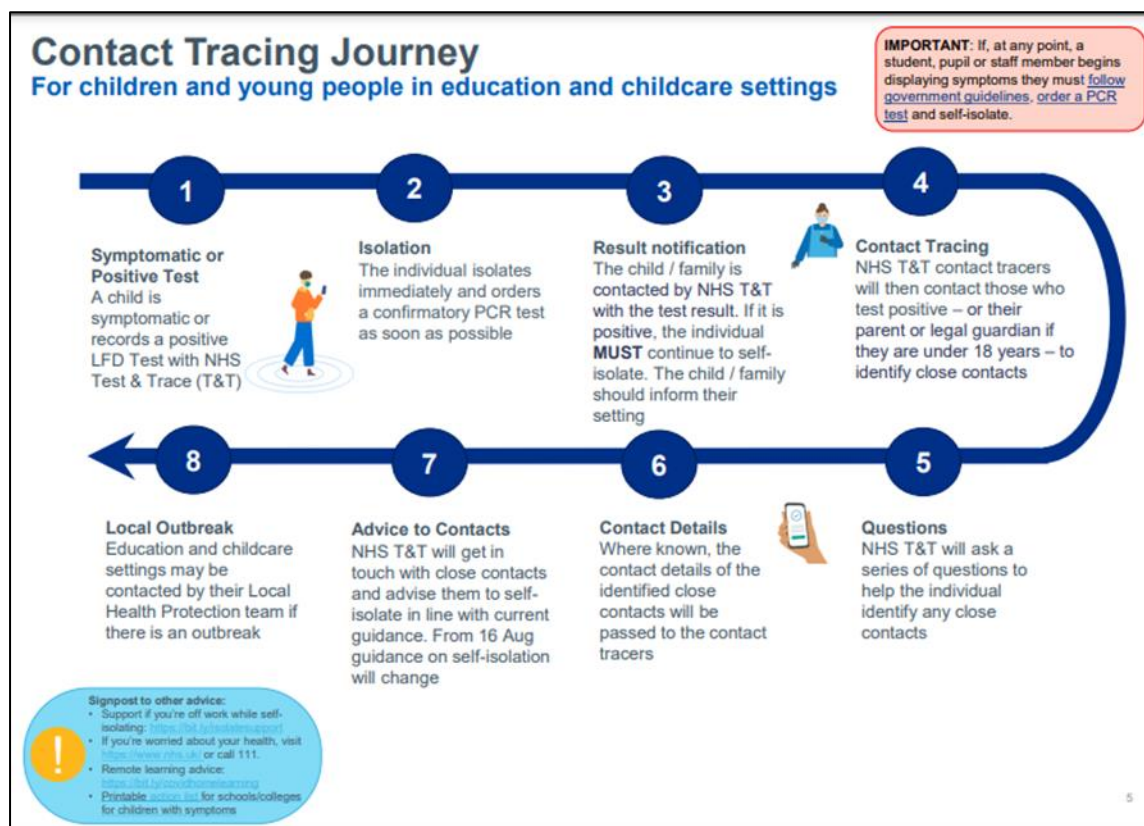
Anyone identified as a **non-household close contact** by NHS Track and Trace must self-isolate until 10 days after the date of their most recent contact with that person.

If they **live in the same household**, they must self-isolate until 10 days after the date of that person developing symptoms or, if that person was asymptomatic, the date of their test. NHS Test and Trace will notify you of the day on which the self-isolation period ends.

**Close contacts are also advised to take a PCR test.** If the test result is negative, they must still complete the full self-isolation period, as the test will not detect all positive cases. If the result is

positive, they will need to self-isolate for a further 10 days – and NHS Test and Trace will contact them to identify any close contacts.

This infographic summarises the process for you.



**From 16 August, if the close contact is under 18, they will not have to self-isolate (in line with the policy for fully vaccinated adults) but will be asked to take an PCR test immediately, and they will not need to self-isolate while awaiting the results of the test.** If the PCR test is positive, they will be required to self-isolate for 10 days from the date of the test. NHS Test and Trace will then get in touch to identify close contacts.

Further guidance on these changes to self-isolation will be provided shortly and as soon as we are provided with further updates we will write to you.

### Managing our risks on site

Following consideration of risks in school, in the context of the highest infection rates in Trafford since the start of the pandemic and the fact that not all our staff are fully vaccinated yet, we are continuing to operate in line with the risk assessments we already have in place for the last week of term. **This means that we expect all staff, visitors and students to continue to wear face coverings in communal areas until the end of term.** If staff and students wish to wear face coverings in classrooms too until we finish, that is perfectly understandable. I appreciate this may seem anomalous to some parents and carers. However, with other restrictions lifting, the risks to exposure actually increase in schools so I hope I can rely on your full support as we do what we can to keep the community safe.

Students should wear a face covering on public and school transport.

## The importance of LFD testing and reporting

The vast majority of our positive cases are from asymptomatic students. **Please could I urge you to ensure that your son, if eligible, takes LFD tests at least twice weekly at home.** Please report the results of each test online straight away, even if your son's result is negative or void [www.gov.uk/report-covid19-result](http://www.gov.uk/report-covid19-result)

**Please do not send your son into school with symptoms of Covid-19 and, instead, arrange for a PCR test.** Please book a test at [www.nhs.uk/coronavirus](http://www.nhs.uk/coronavirus) or call 119

Any positive LFD or PCR reporting can be done by telephone during school hours or at [covid@wellacre.org](mailto:covid@wellacre.org) for out of hours reporting. **This is really important please. Please do not send to the admin email or via Iris Reach (was MyEd) as these are not monitored outside school hours.**

## Operating in September

We await updates from the DfE over the next week and will listen to Greater Manchester Public Health advice before finalising how we will operate in September. We have planned for a return to 'normal' and teachers are looking forward to teaching from one base. We do know that **all year groups have to take two LFD tests on site between 3 and 5 days apart at the start of the new academic year, so it will be a staggered start again for all students in schools.** We hope to be able to confirm arrangements for students' return next week.

## The Week Ahead

**Sports 'Day' will take place in the morning of Monday 19<sup>th</sup> July.** All students should wear Wellacre PE kit and a T shirt in the colour of their House. The weather forecast is very good. Those competing should bring their normal school PE top to change into so they are comfortable for the rest of the day. Please could you make sure your son brings water to drink and wears any sun protection that may be needed. I am really looking forward to seeing the students compete and support each other.

**House Celebration Day will take place on Wednesday 21<sup>st</sup> July.** All students should wear their Wellacre PE kit and a T shirt in the colour of their House. There will be a range of activities for all students to enjoy over the course of the day and win points for their House along the way. **School will finish at 3pm on Wednesday and there will be no Period 6 session.**

Year 10 Internal assessment reports will also be published to parents and carers via MyEd.

**Wellacre will close at 12.20pm on Friday 23<sup>rd</sup> July** for the summer break. The students will have House Celebration assemblies that day which will recognise the achievements of the students over the course of the year. We will also be confirming the Senior Leadership and House Leadership Teams for 2021-22. Perhaps the most keenly anticipated announcement will be the House Trophy Winner for the year! **There will be no lunch service that day. However, students who are in receipt of free school meals can collect a grab bag lunch if they pre-order in the canteen by the end of the day on Wednesday.**

## Uniform donations

Thank you to all those parents and carers who have donated uniform to us for recycling. If you intend to replace your son's outgrown uniform which is clean and in good condition, **please drop it off at reception before Friday** and we will be able to make good use of it in supporting some of our families.

## Eco Centre and Sustainability projects

Lots of students have been clutching seed packs this week to hand in to Mrs Doolan, following my plea last week for donations. We are looking for anything garden related:

- **Small hand tools to larger spades, saws and buckets.**
- **canes, strings, plastic pots and seed trays**
- **spare compost**

If you can help, please drop off at reception before next Friday. Thank you in advance.

### **Showing appreciation**

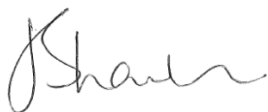
I am really appreciative of your support over the last term since I started as Principal. The challenges we have all faced as a school community have not been easy, and I do recognise the impact of disruption on you as families. I also want to thank the staff at Wellacre who have worked tirelessly in challenging circumstances to do their best for all students. If you have time this week, it would be lovely if you could send a short email or a card to a member of staff who has supported you or who has made a real difference to your son this year. It would be much appreciated by the member of staff.

I will write to you again before we finish with any updates and arrangements for the start of the new academic year.

As always, if you have any queries please contact us and we will always try our best to help. The bulletin is an attachment to this communication. If you don't already do so, please consider following us on Twitter or Facebook as you get to see so much of what makes Wellacre special. The Transition video posted this week is a particular treat. Thank you as always for your ongoing support.

I hope you have a restful weekend.

Best wishes,



Mrs J Sharrock

Principal